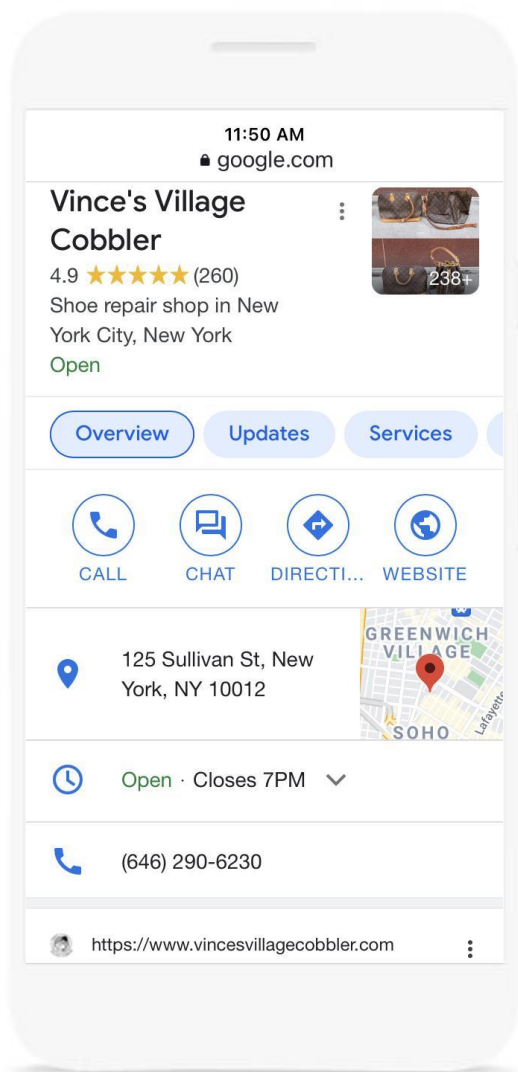


Grow with Google

Get Your Local Business on Google Search and Maps

With a Google Business Profile, your business can stand out for free across Google Search and Maps.

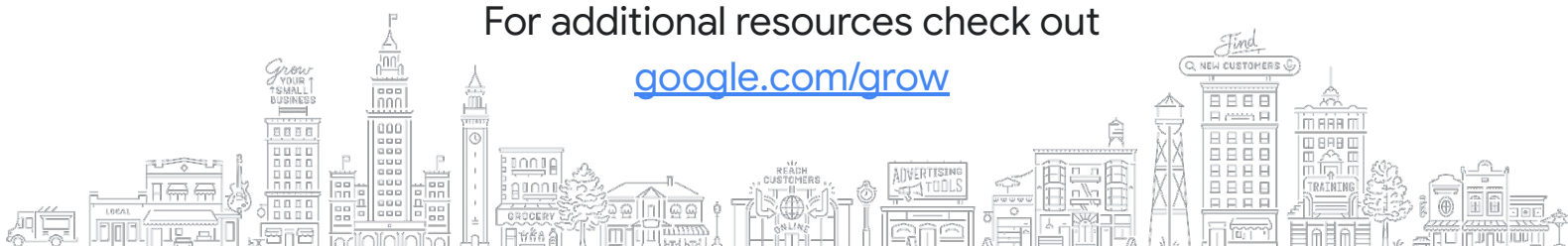


To create and verify a Business Profile:

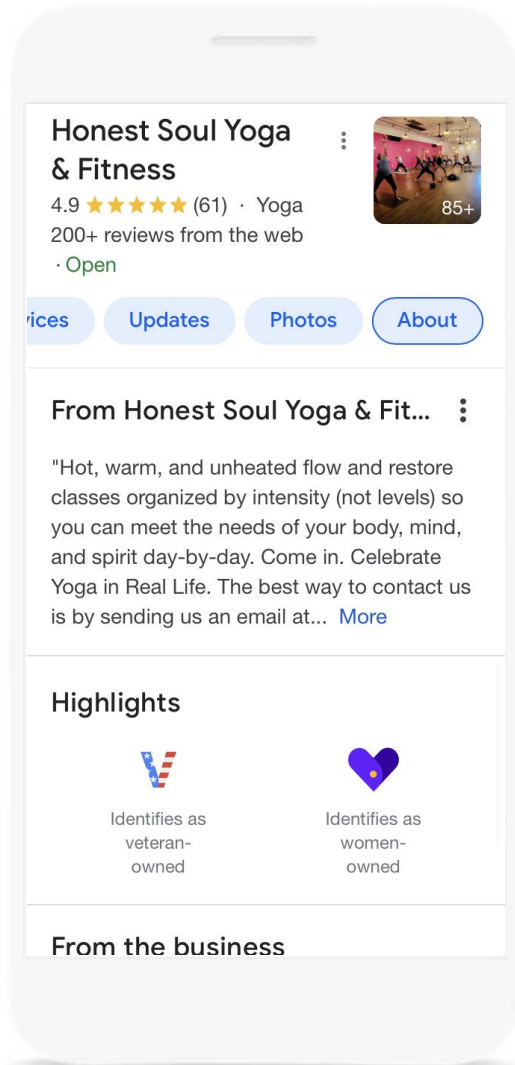
- 1 Visit maps.google.com and search for your address. Click “Add your business” and follow the prompts. You will:
- 2 Enter the name of your business.
- 3 Choose a category.
- 4 Enter your business address. P.O. boxes are not allowed.
- 5 Add a phone number, website, or both.
- 6 To complete verification request a postcard.
- 7 Once you receive this postcard by mail, follow the instructions to finalize the verification process.

For additional resources check out

google.com/grow



Use a Google Business Profile to engage with customers or find new ones with the features listed below.



- 1 [Update your Business Profile](#) with current hours, address and phone number.
- 2 [Post photos, offers, and news](#) directly on your Business Profile.
- 3 [Add attributes](#) to highlight business details like Women-owned, Veteran-owned, Asian-owned, Latino-owned, LBGTQ+-owned, and Black-owned.
- 4 [Link to bookings](#) for your classes and appointments, including online options.
- 5 [Respond to customer reviews](#) to build credibility and loyalty.
- 6 [Explore Performance](#) reports to learn how people find and engage with your Business Profile.

Additional resources from Grow with Google

Google Career Certificates

grow.google/certificates

Prepare for a new career in six months or less with professional training designed by Google. Learn at your own pace and get a certificate to help you stand out to employers.

YouTube Channel

YouTube.com/GrowWithGoogle

Subscribe to the Grow with Google YouTube Channel for expert tips to grow your skills, career, or business.